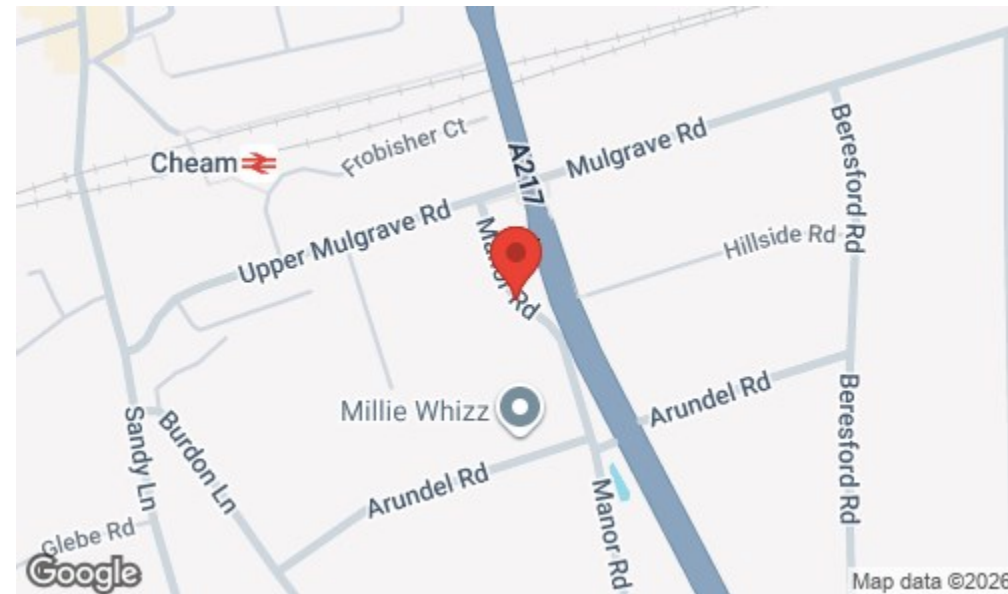


## Location

### Location Map



### Important Note

Centro Residential Sales and Lettings limited have not tested any services, heating system, electrical system, appliances, fixtures and fittings, that may be included in this property and would advise interested parties to satisfy themselves as to their condition or investigating the presence of any deleterious materials.

Viewing: Strictly by appointment through:

**CENTRO RESIDENTIAL SALES AND LETTINGS LIMITED**

Tel: 020 8401 5000

E-mail: [residential@centro.plc.uk](mailto:residential@centro.plc.uk)

See a selection of our properties at [www.centro.plc.uk](http://www.centro.plc.uk)

**£1,850 Per Month -**  
Manor Road, Sutton, Surrey SM2 7AE



### Description

- Two Double Bedrooms
- Garage
- Great Location
- Town House
- Gas Central Heating
- Unfurnished
- Large Living Area
- Utility Room
- Energy rating: D
- Council Tax band: D

### Features

- Gas heating
- Double glazing
- Fitted Kitchen

### What you need to know

- Term: 12 months
- Rent: Price £1850pcm exclusive of bills
- Security deposit: £2134.00
- Energy rating: D
- Council Tax band: D



Accommodation

Additional Photo



All dimensions and measurements are approximate and for guidance only.

*Just Centro's Opinion...*

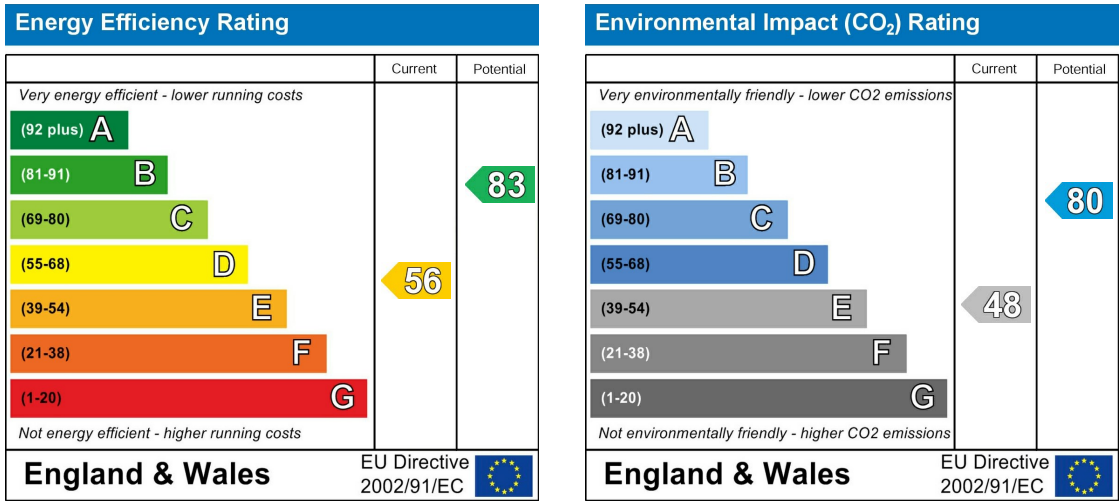
A well presented two double bedroom town house located within short walking distance to Cheam Station.

The property comprises a spacious entrance hall, two large double bedrooms, reception room and dining area, separate kitchen, family bathroom, utility room with W/C and garage.

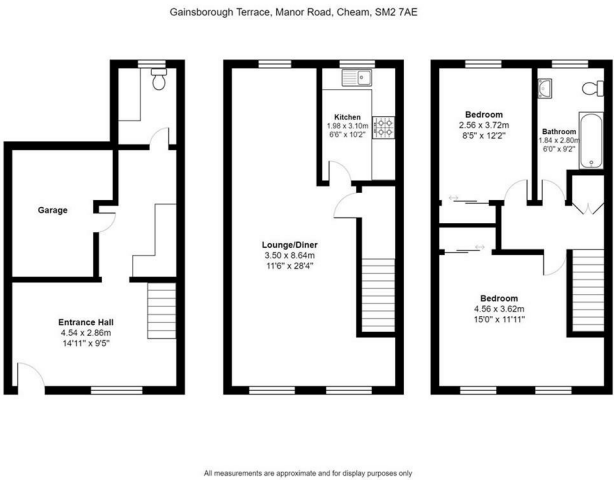
The property is ideally located, being within a stones throw from Cheam Station you are perfectly located for local shops and schools including St. Dunstan's CofE, Nonsuch Girls and Cuddington Croft.

Offered Unfurnished and available now.

EPC Graph



Floor Plan



For illustration purposes only